



The pleura, diaphragms, and chest wall

Pleural space—when it is too white

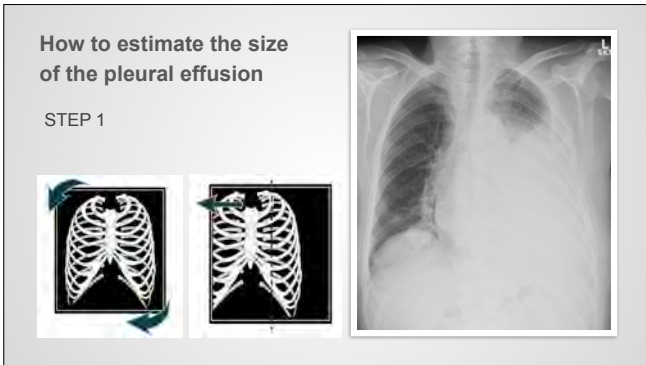
What will I gain from this video?

After watching this video, you will know how to search for and confidently identify a pleural effusion.









How to estimate the size of the pleural effusion

STEP 2



How to estimate the size of the pleural effusion

STEP 3



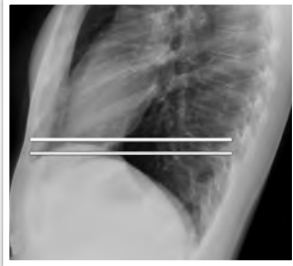
How to estimate the size of the pleural effusion

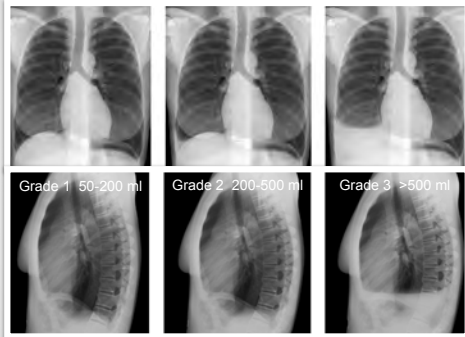
STEP 4



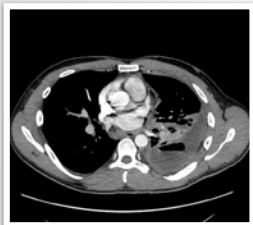
How to estimate the size of the pleural effusion

STEP 5

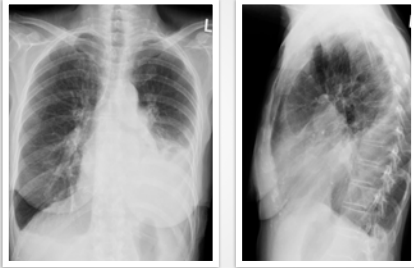




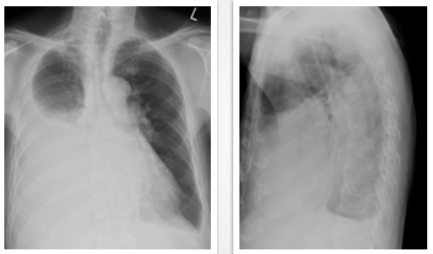
Empyema



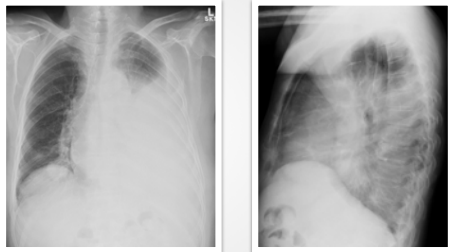
Case 1



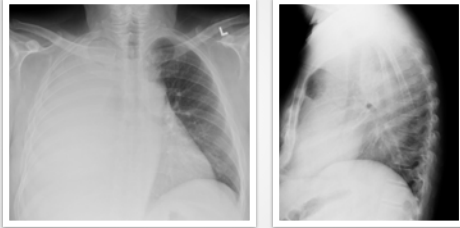
Case 2



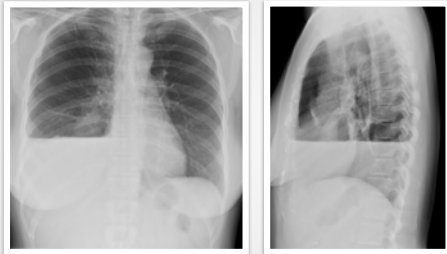
Case 3



Case 4



Case 5



Case 6



Fluid in the pleural space will drop to the lowest point (costovertebral angle initially).

Effusion can be loculated.

If big enough can cause mass effect on the mediastinum.

